

REMEMBER.

NURTURE.

PROTECT.

CONNECT.

“Go back and
fetch it.”



SANKOFA

“Go back and
fetch it.”



SANKOFA

ANCING KING
TE UNIVERSITY

al MLK Project

artin Luther King project is a multi-phase,
h Carolina State University's Communication
d by Victoria Gallagher, PhD. As a rhetorical
ities project, vMLK creates immersive
Rev. Martin Luther King, Jr.'s "A Creative
the Jails]" public speech delivered at
otist Church in Durham, North Carolina.

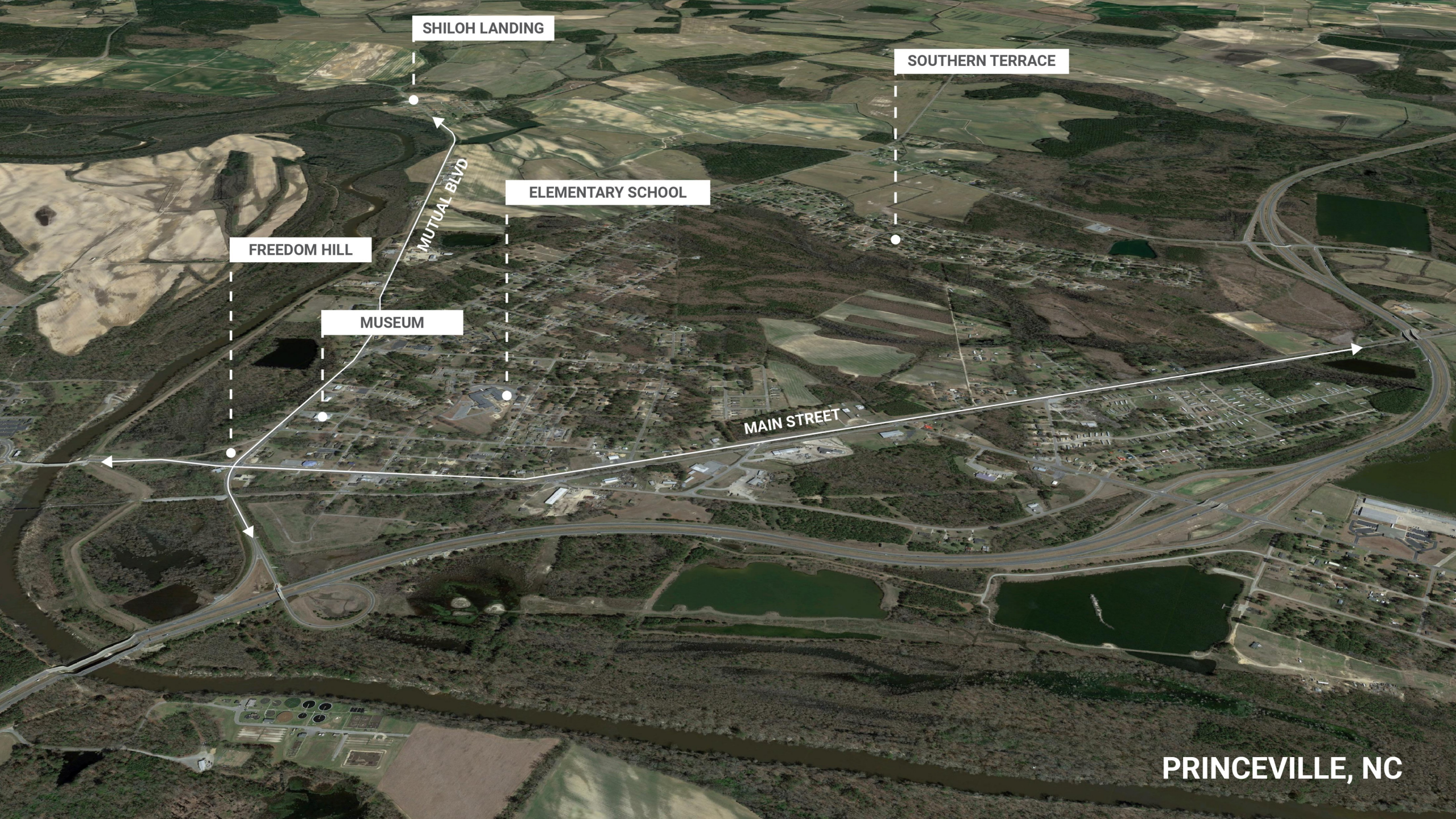


SANKOFA



A CREATIVE PROTEST
February 16, 1960, just days after the start
Greensboro sit-in of 1960, Dr. Martin Luther King Jr.
delivered what would become a widely influential speech
titled, "A Creative Protest." The speech was delivered at
White Rock Baptist Church in Durham, NC.

with students from North Carolina Agr
State University demonstrated dur
own at the lunch counter in the Wanch
Roberson, NC. It was not the first sit-in, but it
played a significant role in the non-violent
1960, 1961



SHILOH LANDING

SOUTHERN TERRACE

ELEMENTARY SCHOOL

FREEDOM HILL

MUTUAL BLVD

MUSEUM

MAIN STREET

PRINCEVILLE, NC

REMEMBER.

NURTURE.

PROTECT.

CONNECT.



FREEDOM HILL

Community established here by freed blacks in 1865. Incorporated as Princeville in 1885.

DIVISION OF ARCHIVES AND HISTORY 1988

REMEMBER.



REMEMBER.

SHILOH LANDING

TAR RIVER

MURAL

HERITAGE PARK

AMPHITHEATER

ELEVATED FREEDOM HILL

WELCOME CENTER



PRINCEVILLE MUSEUM

MOUNT ZION CHURCH

REMEMBER.

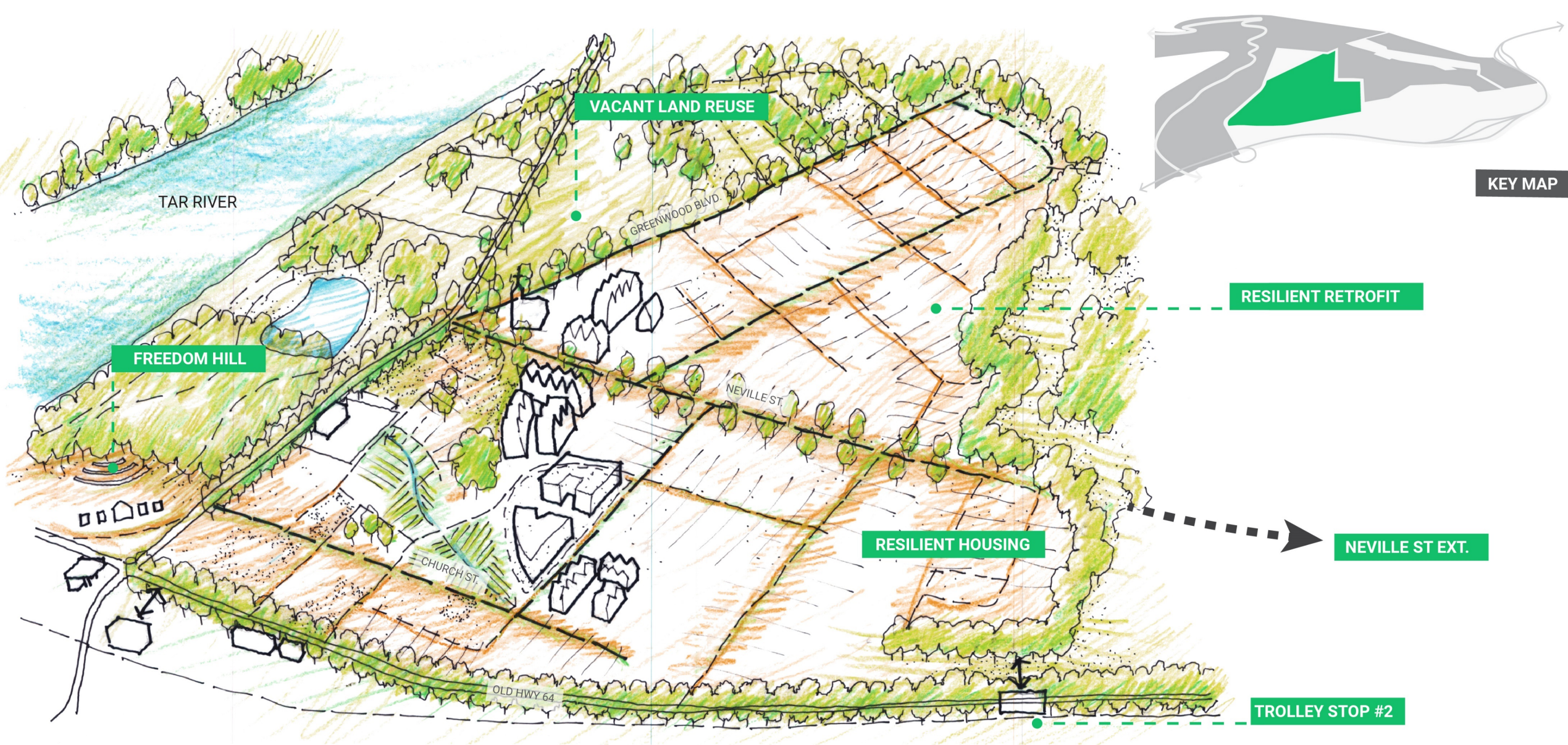


GUERRILLA
GARDEN

NURTURE.



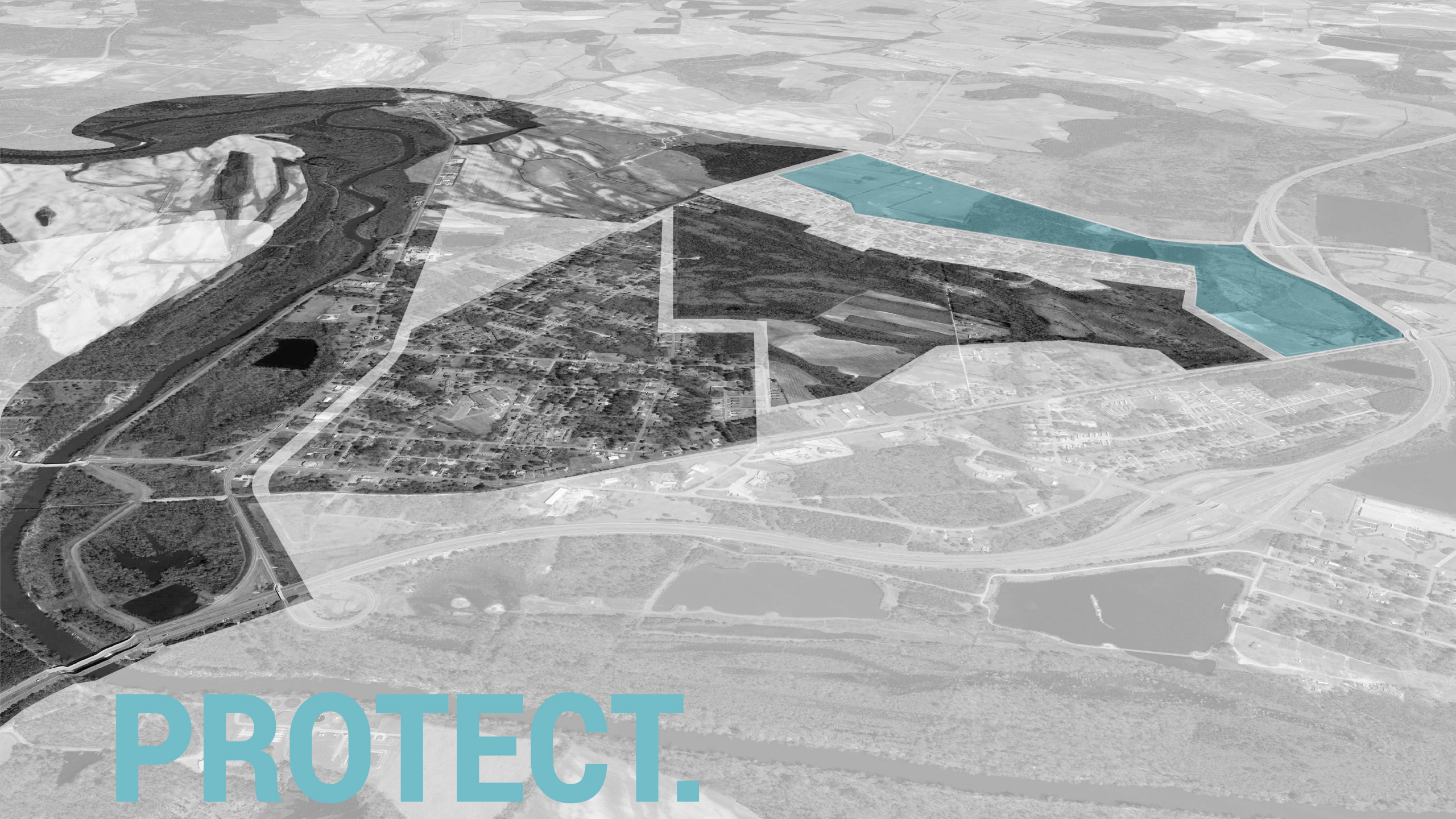
NURTURE.



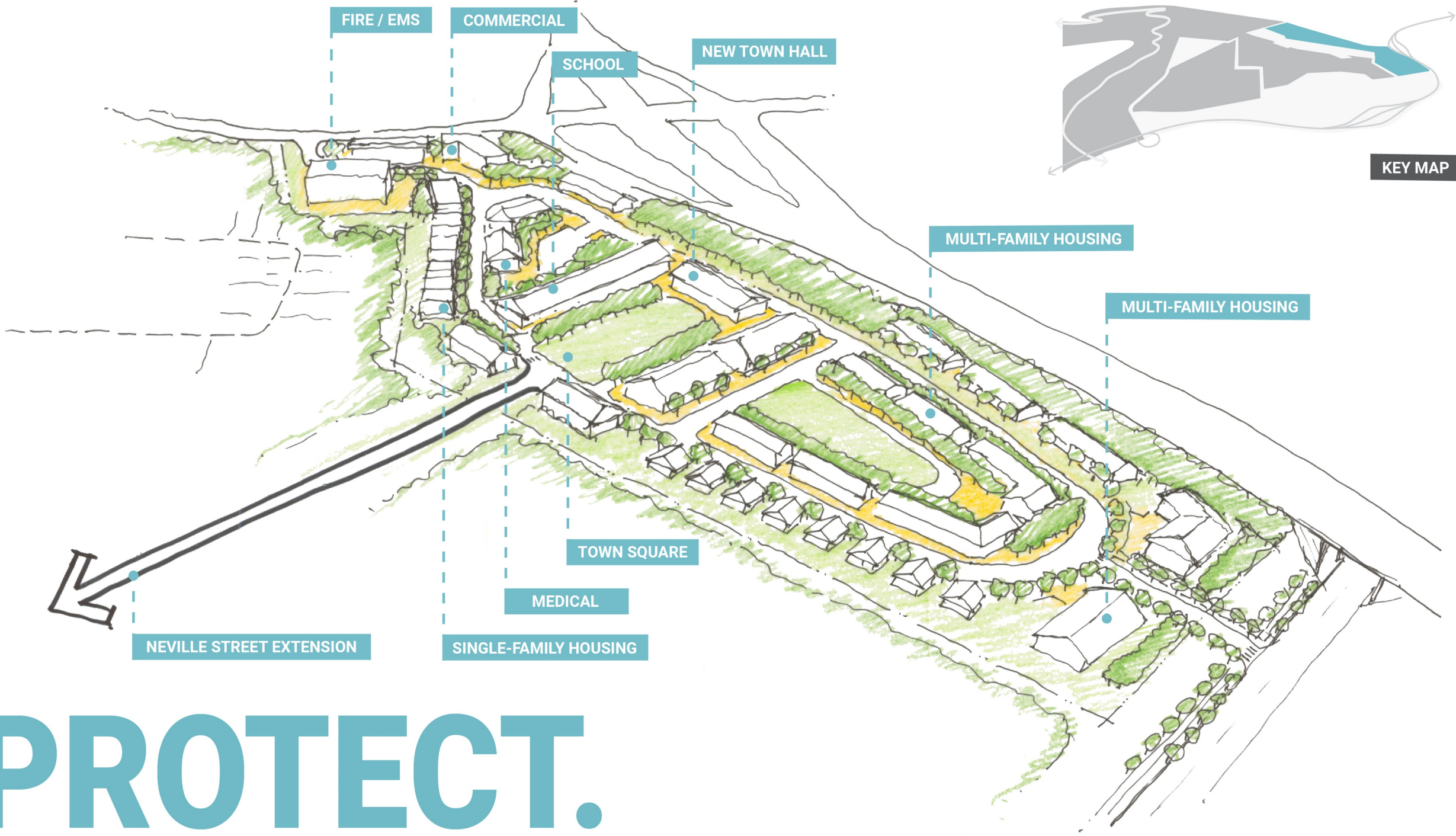
NURTURE.



PROTECT.



PROTECT.



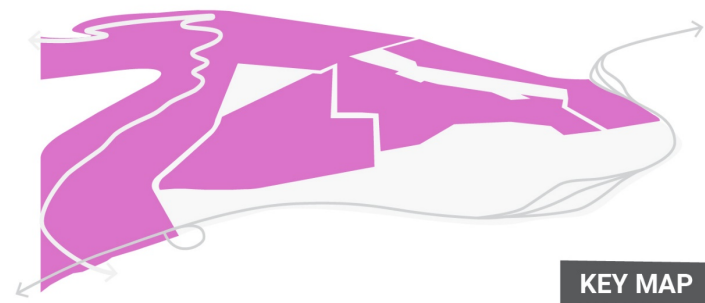
PROTECT.



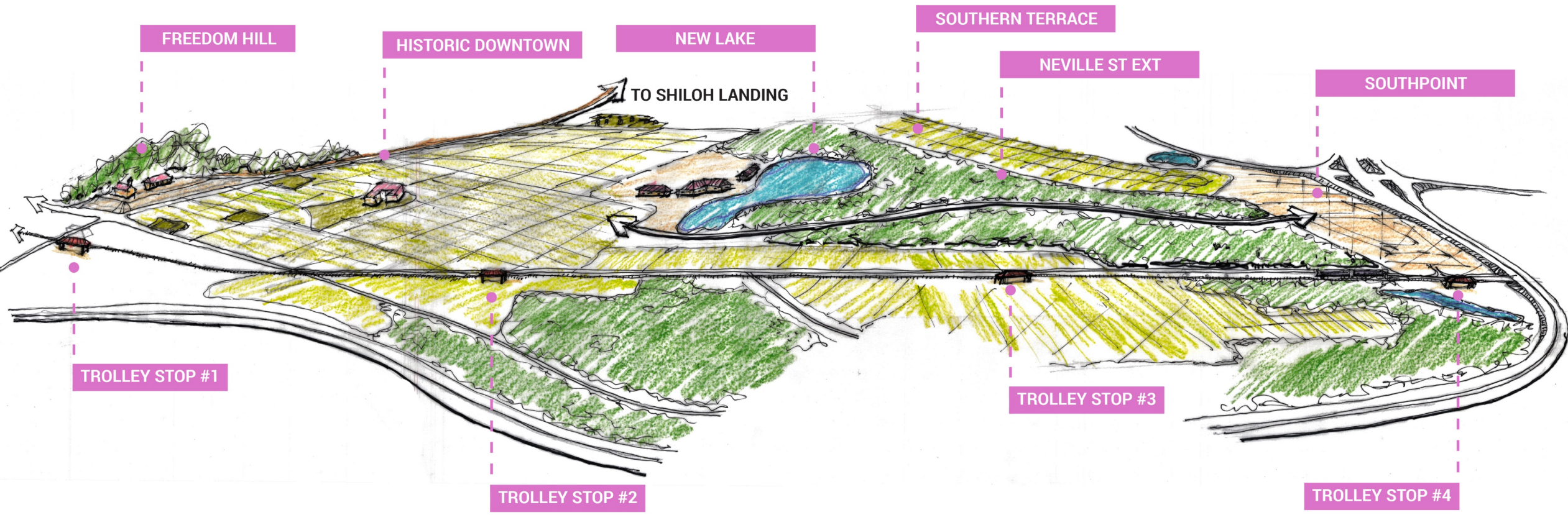
CONNECT.



CONNECT.



KEY MAP



CONNECT.

NEXT STEPS AND RESOURCES

RESOURCES

REMEMBER

NURTURE

PROTECT

CONNECT

NON-PROFITS

Faith Based Groups
NeighborWorks
Foundations

STATE AGENCIES

Cultural Resources
Emergency Management
Historic Preservation Office
Commerce
Transportation
Environmental Quality

FEDERAL AGENCIES

Housing and Urban Development (HUD)
Federal Emergency Management Agency (FEMA)
Department of the Interior

PRIVATE

Developers
Homebuilders
Retail
Industrial
Tourism
Individual Investors

